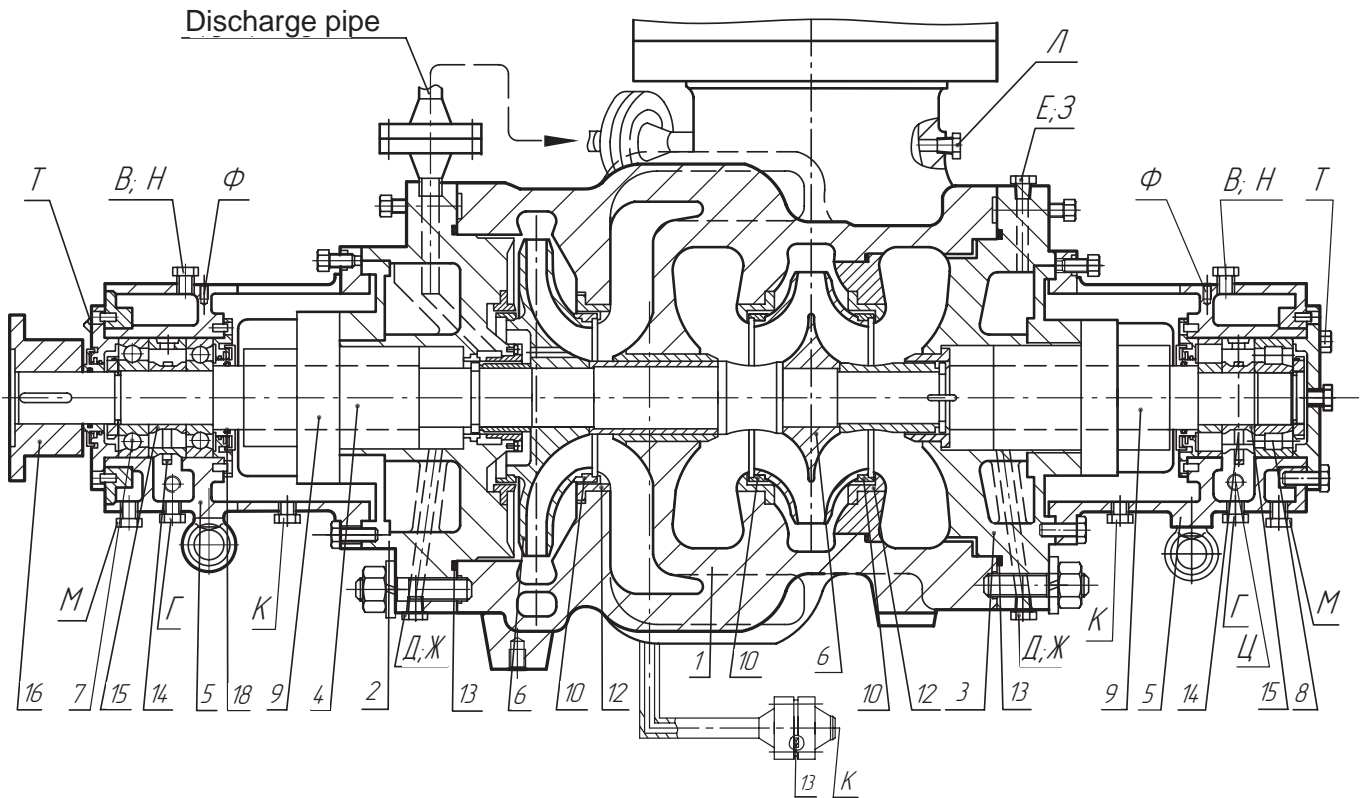


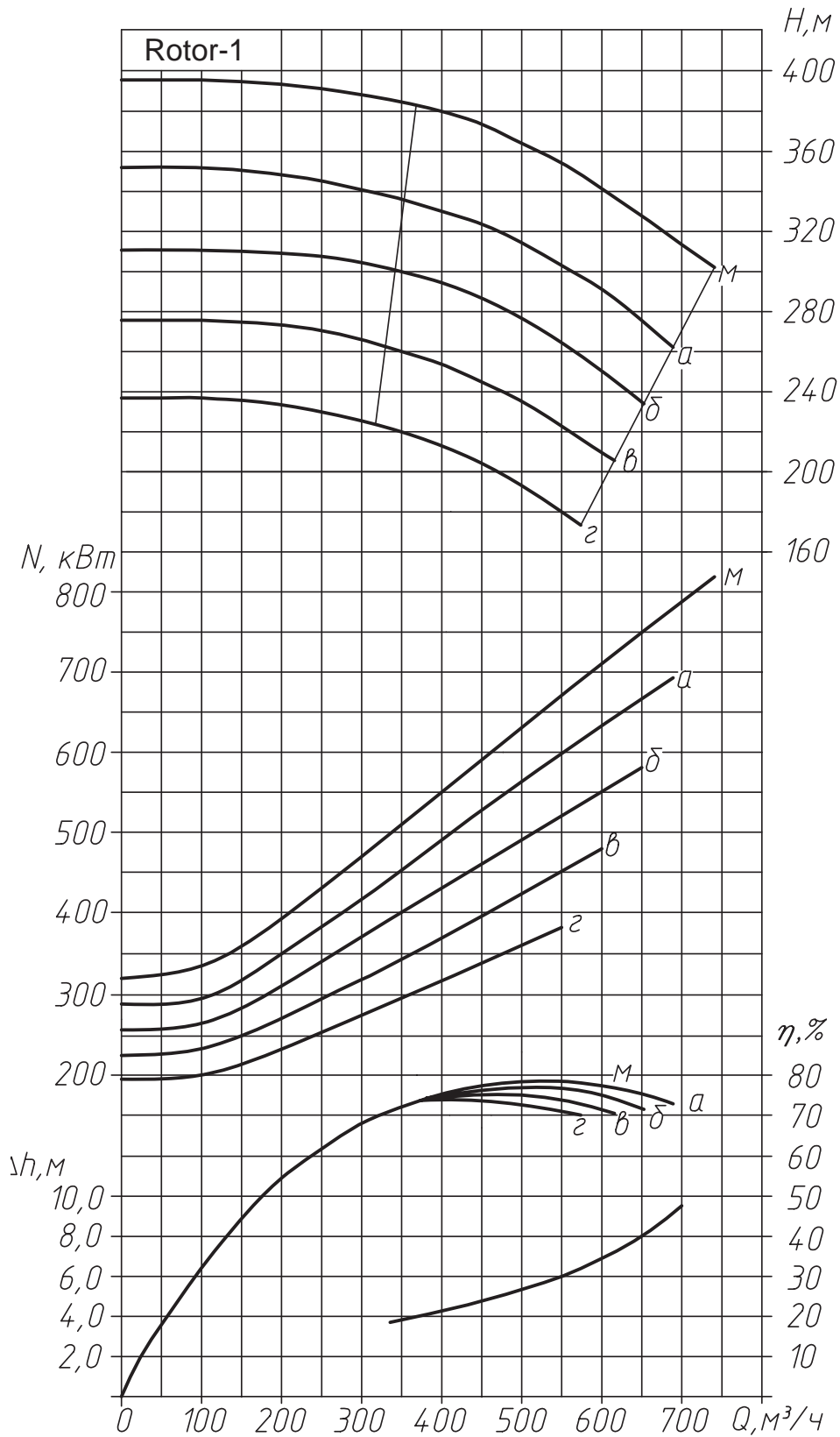
# Pump HT560/335-300



- |                                       |                             |
|---------------------------------------|-----------------------------|
| 1. Pump casing;                       | 10. Sealing rings (rotary); |
| 2. High pressure pump cover;          | 12. Sealing rings           |
| 3. Low pressure pump cover;           | 13. Spiral-wound gaskets;   |
| 4. Shaft;                             | 14. Oil supply ring;        |
| 5. Bearing housing;                   | 15. Spacing bushing;        |
| 6. Impellers;                         | 16. Half-clutch;            |
| 7. Radial-thrust ball bearing (ball); | 18. Sealing rings;          |
| 8. Rolling radial bearing;            | 19-20. Nut-Washer           |
| 9. Shaft sealing;                     |                             |

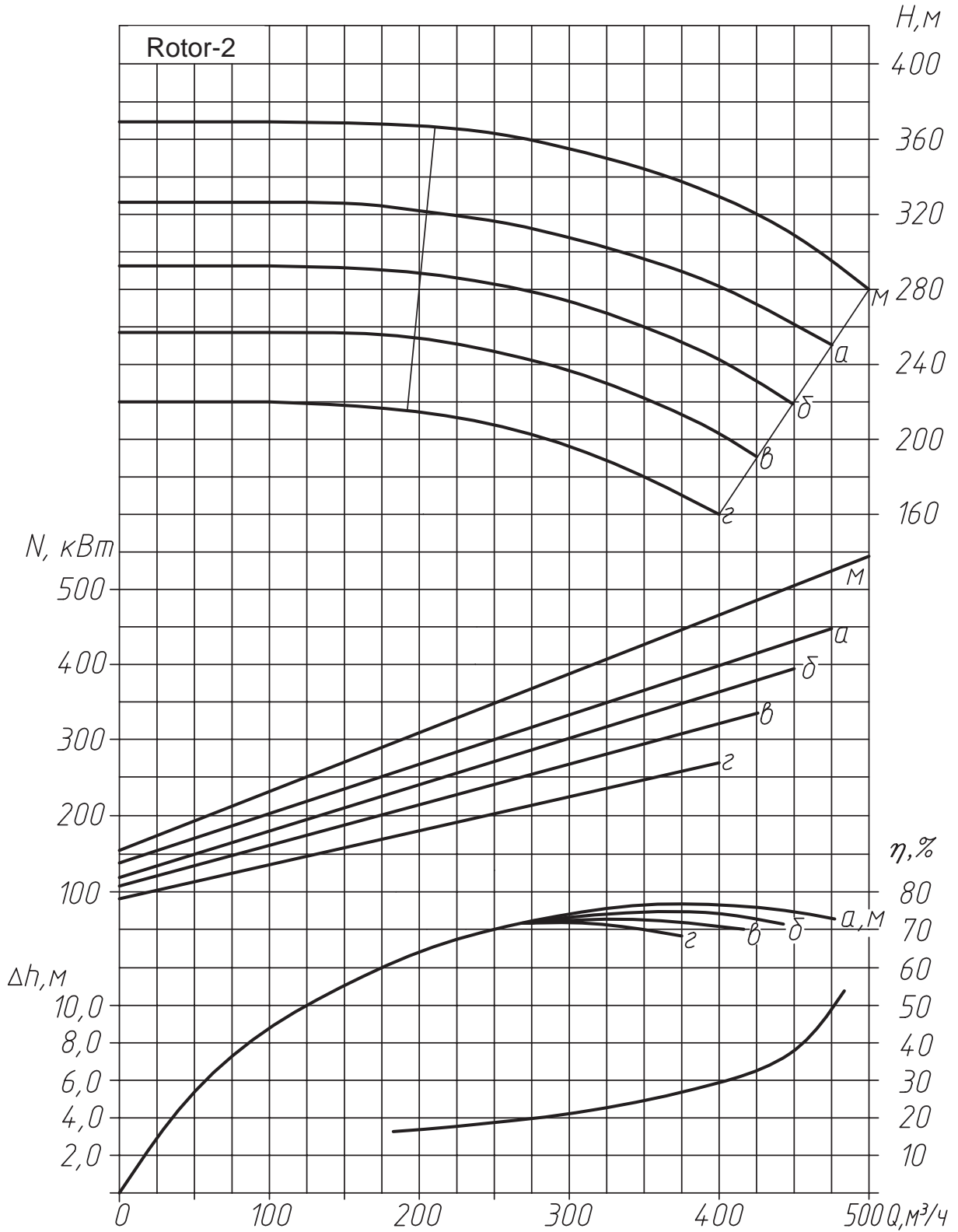
## Performance of pump HT560/335-300

$n = 2950 \text{ rev/min}$     $\gamma = 0,01 \text{ cm}^2/\text{s}$     $\rho = 1000 \text{ kg/m}^3$

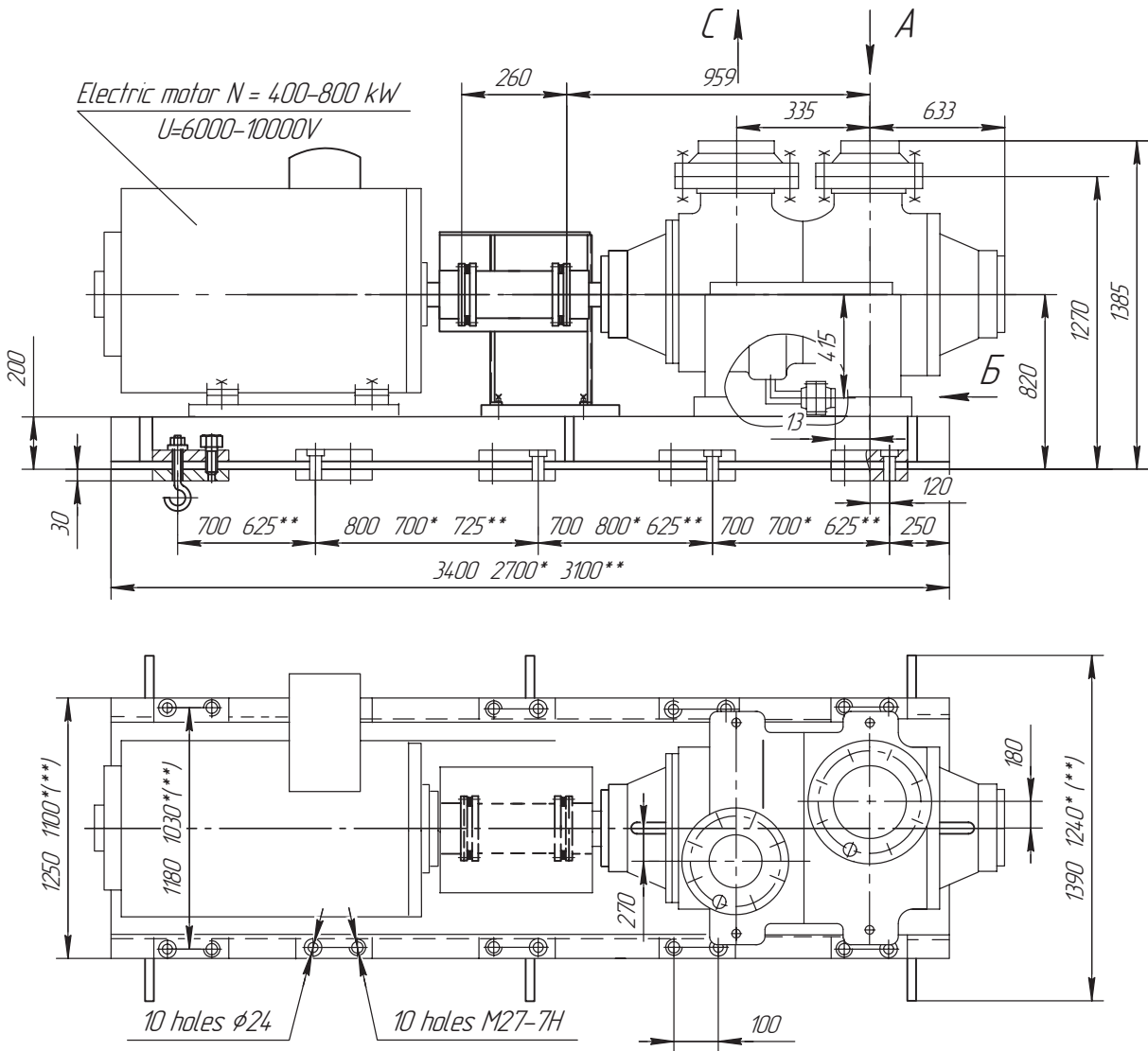


# Performance of pump HT560/335-300

$n = 2950 \text{ rev/min}$   $\gamma = 0,01 \text{ cm}^2/\text{s}$   $\rho = 1000 \text{ kg/m}^3$



# Outline drawing of pumpHT560/335-300



\* Dimensions for electric motor  $N = 132-315 \text{ kW}$   $U = 380/660 \text{ V}$

\*\* Dimensions for electric motor  $N = 200-400 \text{ kW}$   $U = 6000 \text{ V}$

